

\$560,000 - Hyw 43 Rr 42, Rural Lac Ste. Anne County

MLS® #E4457014

\$560,000

0 Bedroom, 0.00 Bathroom,
Rural on 160.00 Acres

None, Rural Lac Ste. Anne County, AB

160 Acres of pasture land on a dead end range road in Lac Ste Anne County with creek running thru it. Has some revenue from power company plus fenced on east and west sides. Close to Highway 43 .

Essential Information

MLS® #	E4457014
Price	\$560,000
Bathrooms	0.00
Acres	160.00
Type	Rural
Sub-Type	Vacant Lot/Land
Status	Active

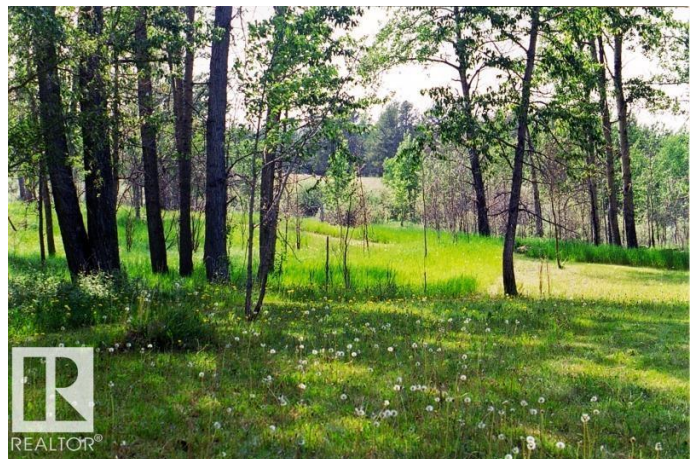
Community Information

Address	Hyw 43 Rr 42
Area	Rural Lac Ste. Anne County
Subdivision	None
City	Rural Lac Ste. Anne County
County	ALBERTA
Province	AB
Postal Code	T0E 1G0

Exterior

Exterior Features Fenced

Additional Information



Date Listed September 9th, 2025

Days on Market 10

Zoning Zone 70

DATA IS DEEMED RELIABLE BUT IS NOT GUARANTEED ACCURATE BY THE REALTORS® ASSOCIATION OF EDMONTON. COPYRIGHT 2025 BY THE REALTORS® ASSOCIATION OF EDMONTON. ALL RIGHTS RESERVED. Trademarks are owned or controlled by the Canadian Real Estate Association (CREA) and identify real estate professionals who are members of CREA (REALTOR®, REALTORS®) and/or the quality of services they provide (MLS®, Multiple Listing Service®)

Listing information last updated on September 19th, 2025 at 1:32am MDT