

\$339,900 - 37 12815 Cumberland Road, Edmonton

MLS® #E4453869

\$339,900

2 Bedroom, 2.50 Bathroom, 1,415 sqft

Condo / Townhouse on 0.00 Acres

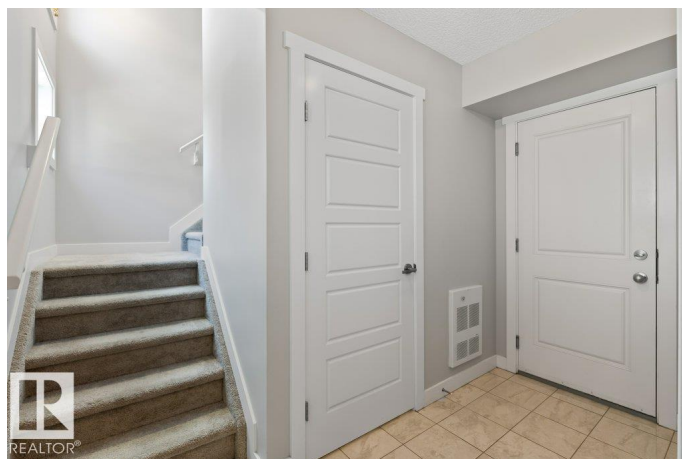
Pembina, Edmonton, AB

Beautiful and well-designed end unit 3-storey home featuring 2 master bedrooms, each with its own ensuite. The entry-level offers a spacious foyer, a private office, mechanical room, and access to the double attached garage. The bright and open second floor features a modern white U-shaped kitchen with quartz countertops, stainless steel appliances, and a large walk-in pantry. The living room opens to a vinyl and aluminum finished deck, perfect for relaxing. A convenient powder room completes this level. Upstairs, one master includes two closets and a full ensuite, while the second has a walk-in closet and ensuite. Enjoy the convenience of upper-floor laundry. Quality finishes throughout including laminate, tile, and carpet flooring. Central A/C for year-round comfort. Visitor parking available. Close to parks, schools, shopping, and easy access to Anthony Henday and Yellowhead Trail.

Built in 2017

Essential Information

MLS® #	E4453869
Price	\$339,900
Bedrooms	2
Bathrooms	2.50
Full Baths	2



Half Baths	1
Square Footage	1,415
Acres	0.00
Year Built	2017
Type	Condo / Townhouse
Sub-Type	Townhouse
Style	3 Storey
Status	Active

Community Information

Address	37 12815 Cumberland Road
Area	Edmonton
Subdivision	Pembina
City	Edmonton
County	ALBERTA
Province	AB
Postal Code	T6V 0M2

Amenities

Amenities	Air Conditioner, Deck, Parking-Extra
Parking	Double Garage Attached

Interior

Interior Features	ensuite bathroom
Appliances	Air Conditioning-Central, Dishwasher-Built-In, Dryer, Garage Control, Garage Opener, Microwave Hood Fan, Refrigerator, Stove-Electric, Washer, TV Wall Mount
Heating	Forced Air-1, Natural Gas
Stories	3
Has Basement	Yes
Basement	None, No Basement

Exterior

Exterior	Wood, Stone, Vinyl
Exterior Features	Flat Site, Fruit Trees/Shrubs, Landscaped, Playground Nearby, Public Transportation, Schools, Shopping Nearby
Roof	Asphalt Shingles
Construction	Wood, Stone, Vinyl
Foundation	Concrete Perimeter

Additional Information

Date Listed	August 20th, 2025
Days on Market	10
Zoning	Zone 27
Condo Fee	\$239

DATA IS DEEMED RELIABLE BUT IS NOT GUARANTEED ACCURATE BY THE REALTORS® ASSOCIATION OF EDMONTON. COPYRIGHT 2025 BY THE REALTORS® ASSOCIATION OF EDMONTON. ALL RIGHTS RESERVED.Trademarks are owned or controlled by the Canadian Real Estate Association (CREA) and identify real estate professionals who are members of CREA (REALTOR®, REALTORS®) and/or the quality of services they provide (MLS®, Multiple Listing Service®)

Listing information last updated on August 30th, 2025 at 10:32am MDT