

## \$639,900 - 4037 Hawthorn Link, Edmonton

MLS® #E4448261

**\$639,900**

4 Bedroom, 3.50 Bathroom, 2,198 sqft

Single Family on 0.00 Acres

The Orchards At Ellerslie, Edmonton, AB

STYLE, FUNCTION, AND INCOME POTENTIAL IN THE HEART OF SOUTHEAST EDMONTON! Welcome to this MODERN 2-STOREY HOME & GARAGE SUITE in the desirable community of The Orchards. Featuring a CHEF'S KITCHEN complete with STAINLESS STEEL APPLIANCES, DOUBLE-WIDE FRIDGE/FREEZER, BUILT-IN OVEN, and COUNTERTOP GAS STOVE—perfect for home cooks and entertainers alike. The main floor offers an open-concept layout with large windows, while the upper level includes spacious bedrooms and a well-appointed primary suite. The UNFINISHED BASEMENT is ready for your vision. A major bonus is the LEGAL 1-BEDROOM GARAGE SUITE—featuring its own PRIVATE ENTRANCE, full kitchen, living space, and laundry—ideal for guests, rental income, or multigenerational living. Located near parks, schools, shopping, and major routes, this is a turn-key home with flexibility for modern living.

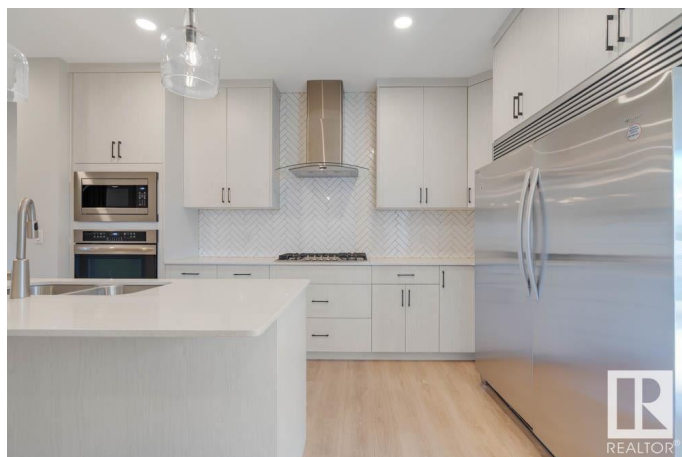
Built in 2021

### Essential Information

MLS® # E4448261

Price \$639,900

Bedrooms 4



Bathrooms	3.50
Full Baths	3
Half Baths	1
Square Footage	2,198
Acres	0.00
Year Built	2021
Type	Single Family
Sub-Type	Detached Single Family
Style	2 Storey
Status	Active

### Community Information

Address	4037 Hawthorn Link
Area	Edmonton
Subdivision	The Orchards At Ellerslie
City	Edmonton
County	ALBERTA
Province	AB
Postal Code	T6X 2Y8

### Amenities

Amenities	Carbon Monoxide Detectors, Deck, Front Porch, HRV System
Parking	Double Garage Detached

### Interior

Interior Features	ensuite bathroom
Appliances	Microwave Hood Fan, Oven-Built-In, Oven-Microwave, Stove-Countertop Gas, Stove-Electric, Window Coverings, Dryer-Two, Refrigerators-Two, Washers-Two, Dishwasher-Two
Heating	Forced Air-1, Natural Gas
Fireplace	Yes
Fireplaces	Insert
Stories	2
Has Basement	Yes
Basement	Full, Unfinished

### Exterior

Exterior	Wood, Vinyl
Exterior Features	Back Lane, Flat Site, Landscaped, Playground Nearby, Public

	Transportation, Schools, Shopping Nearby
Roof	Asphalt Shingles
Construction	Wood, Vinyl
Foundation	Concrete Perimeter

### **Additional Information**

Date Listed	July 17th, 2025
Days on Market	12
Zoning	Zone 53
HOA Fees	450
HOA Fees Freq.	Annually

DATA IS DEEMED RELIABLE BUT IS NOT GUARANTEED ACCURATE BY THE REALTORS® ASSOCIATION OF EDMONTON. COPYRIGHT 2025 BY THE REALTORS® ASSOCIATION OF EDMONTON. ALL RIGHTS RESERVED. Trademarks are owned or controlled by the Canadian Real Estate Association (CREA) and identify real estate professionals who are members of CREA (REALTOR®, REALTORS®) and/or the quality of services they provide (MLS®, Multiple Listing Service®)

Listing information last updated on July 29th, 2025 at 10:03am MDT