

# \$2,200 - 2215 24 Street, Edmonton

MLS® #E4448079

**\$2,200**

3 Bedroom, 2.50 Bathroom, 1,463 sqft  
Rental on 0.00 Acres

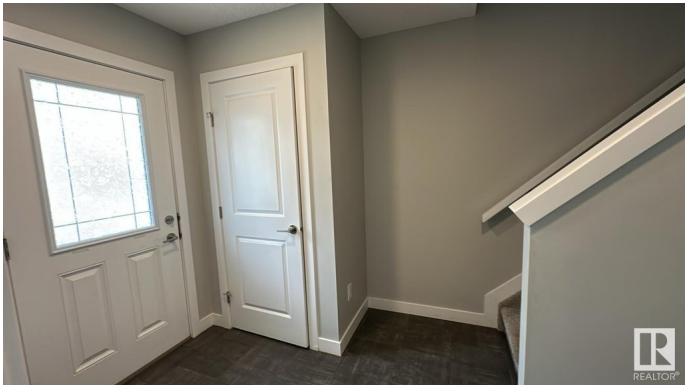
Laurel, Edmonton, AB

Welcome to this stunning 2-storey townhouse located in the highly desirable Laurel community! This beautiful home features a double attached garage, offering plenty of space for parking and storage. With paved road access and immediate possession available, moving in has never been easier. The home is meticulously maintained and pet-free, making it an ideal choice for those with allergies or looking for a clean, move-in-ready property. Nestled in a family-friendly neighborhood, youâ€™™ll appreciate the close proximity to schools, parks, playgrounds, shopping centers, public transit, and the Meadows Community Recreation Centre. Easy access to major routes like Anthony Henday Drive ensures a smooth commute

Built in 2019

## Essential Information

MLS® #	E4448079
Price	\$2,200
Bedrooms	3
Bathrooms	2.50
Full Baths	2
Half Baths	1
Square Footage	1,463
Acres	0.00



Year Built	2019
Type	Rental
Style	2 Storey
Status	Active

### Community Information

Address	2215 24 Street
Area	Edmonton
Subdivision	Laurel
City	Edmonton
County	ALBERTA
Province	AB
Postal Code	T6T 1A6

### Amenities

Parking	Double Garage Attached
---------	------------------------

### Interior

Appliances	Dishwasher-Built-In, Dryer, Oven-Microwave, Refrigerator, Stove-Electric, Washer
------------	--

### Additional Information

Date Listed	July 16th, 2025
Days on Market	10
Zoning	Zone 30

DATA IS DEEMED RELIABLE BUT IS NOT GUARANTEED ACCURATE BY THE REALTORS® ASSOCIATION OF EDMONTON. COPYRIGHT 2025 BY THE REALTORS® ASSOCIATION OF EDMONTON. ALL RIGHTS RESERVED. Trademarks are owned or controlled by the Canadian Real Estate Association (CREA) and identify real estate professionals who are members of CREA (REALTOR®, REALTORS®) and/or the quality of services they provide (MLS®, Multiple Listing Service®)

Listing information last updated on July 26th, 2025 at 2:17am MDT