

\$789,900 - 460 21539 Twp Road 503, Rural Leduc County

MLS® #E4448052

\$789,900

5 Bedroom, 3.00 Bathroom, 1,741 sqft

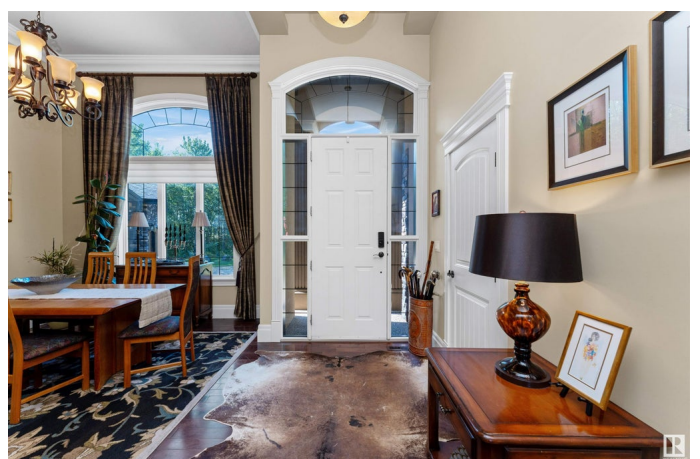
Rural on 2.20 Acres

Wildland Meadows, Rural Leduc County, AB

Welcome to this beautifully crafted custom-built bungalow nestled on a picturesque, treed 2+acre lot in prestigious Wildland Meadows. Backing onto the breathtaking 14,000-acre Ministik Bird Sanctuary, this peaceful retreat offers total privacy and serenityâ€” 20 mins from Sherwood Park, Downtown Edmonton, Beaumont & Leduc. The gourmet kitchen features granite countertops, stainless steel appliances, and flows seamlessly into a great room with soaring ceilings and a striking floor-to-ceiling stone fireplace. The spacious primary suite is a true escape, complete with a luxurious ensuite. A formal dining room and bright breakfast nook lead to a large deckâ€”perfect for enjoying the surroundings. The fully finished basement offers abundant space for family & guests, including 2 additional bdrms, a rec room, a 5-piece bath, & a beautifully designed media room w/ wet bar. Add' Feat: Heated triple garage, stone pillars, crown mouldings, granite accents, rich hardwood, and 9' ceilings in the basement. Welcome home.

Built in 2010

Essential Information



MLS® #	E4448052
Price	\$789,900
Bedrooms	5
Bathrooms	3.00
Full Baths	3
Square Footage	1,741
Acres	2.20
Year Built	2010
Type	Rural
Sub-Type	Detached Single Family
Style	Bungalow
Status	Active

Community Information

Address	460 21539 Twp Road 503
Area	Rural Leduc County
Subdivision	Wildland Meadows
City	Rural Leduc County
County	ALBERTA
Province	AB
Postal Code	T0B 3M0

Amenities

Features	Air Conditioner, Bar, Ceiling 10 ft., Deck, Fire Pit, R.V. Storage, Vaulted Ceiling, Vinyl Windows, Wet Bar, Natural Gas BBQ Hookup
Parking Spaces	3

Interior

Interior Features	ensuite bathroom
Heating	Forced Air-1, Natural Gas
Fireplace	Yes
Stories	2
Has Basement	Yes
Basement	Full, Finished

Exterior

Exterior	Wood
Exterior Features	Flat Site, Fruit Trees/Shrubs, Golf Nearby, Landscaped, Park/Reserve, Private Setting, Recreation Use, Schools, Shopping Nearby

Construction	Wood
Foundation	Concrete Perimeter

Additional Information

Date Listed	July 15th, 2025
Days on Market	7
Zoning	Zone 80
Condo Fee	\$125

DATA IS DEEMED RELIABLE BUT IS NOT GUARANTEED ACCURATE BY THE REALTORS® ASSOCIATION OF EDMONTON. COPYRIGHT 2025 BY THE REALTORS® ASSOCIATION OF EDMONTON. ALL RIGHTS RESERVED.Trademarks are owned or controlled by the Canadian Real Estate Association (CREA) and identify real estate professionals who are members of CREA (REALTOR®, REALTORS®) and/or the quality of services they provide (MLS®, Multiple Listing Service®)

Listing information last updated on July 22nd, 2025 at 9:02am MDT