

\$599,900 - 1510 Westerra Bend, Stony Plain

MLS® #E4447920

\$599,900

4 Bedroom, 3.50 Bathroom, 2,501 sqft

Single Family on 0.00 Acres

Westerra, Stony Plain, AB

Ideally situated between High Park Kä9 School and Stony Plain Memorial High School, this impressive home offers nearly 4,000 sq ft of finished living space and is perfect for growing families! The oversized 26x21 double attached garage includes a new garage door, while a new furnace and new dishwasher add modern convenience. Inside, enjoy soaring 18-ft ceilings in the main living room, 3 family rooms, a den, formal dining, and a huge kitchen with a center island and ample white cabinetry. With 4 bedrooms (3 up, 1 down) and 4 baths, including a luxurious 5-pce ensuite in the large primary bedroom with French doors and walk-in closet, thereâ€™s room for everyone. The finished basement includes a newer 3-pce bath, dry bar, and space for a pool table. Enjoy sunny evenings in your west-facing backyard featuring a large deck, pergola, and a huge storage shed. Hardwood, ceramic tile, and cozy carpet throughout. Covered front porch adds charm. A true gem in a family-friendly neighborhood!

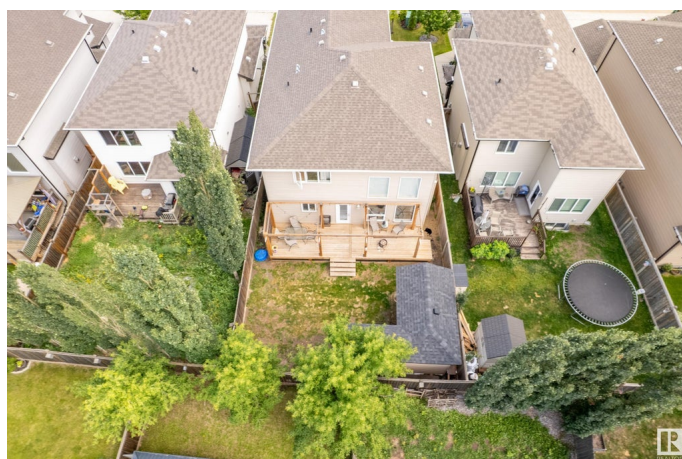
Built in 2014

Essential Information

MLS® # E4447920

Price \$599,900

Bedrooms 4



| | |
|----------------|------------------------|
| Bathrooms | 3.50 |
| Full Baths | 3 |
| Half Baths | 1 |
| Square Footage | 2,501 |
| Acres | 0.00 |
| Year Built | 2014 |
| Type | Single Family |
| Sub-Type | Detached Single Family |
| Style | 2 Storey |
| Status | Active |

Community Information

| | |
|-------------|--------------------|
| Address | 1510 Westerra Bend |
| Area | Stony Plain |
| Subdivision | Westerra |
| City | Stony Plain |
| County | ALBERTA |
| Province | AB |
| Postal Code | T7Z 0B3 |

Amenities

| | |
|----------------|--|
| Amenities | On Street Parking, Ceiling 9 ft., Deck, No Smoking Home, Vinyl Windows, Wall Unit-Built-In |
| Parking Spaces | 5 |
| Parking | Double Garage Attached, Over Sized |

Interior

| | |
|-------------------|--|
| Interior Features | ensuite bathroom |
| Appliances | Dishwasher-Built-In, Dryer, Fan-Ceiling, Garage Control, Garage Opener, Microwave Hood Fan, Refrigerator, Storage Shed, Stove-Electric, Washer, Window Coverings |
| Heating | Forced Air-1, Natural Gas |
| Fireplace | Yes |
| Fireplaces | Mantel |
| Stories | 3 |
| Has Basement | Yes |
| Basement | Full, Finished |

Exterior

| | |
|-------------------|---|
| Exterior | Wood, Vinyl |
| Exterior Features | Fenced, Landscaped, Low Maintenance Landscape, No Back Lane, Paved Lane, Picnic Area, Playground Nearby, Schools, Shopping Nearby |
| Roof | Asphalt Shingles |
| Construction | Wood, Vinyl |
| Foundation | Concrete Perimeter |

School Information

| | |
|------------|----------------------|
| Elementary | High Park |
| Middle | High Park |
| High | Stony Plain Memorial |

Additional Information

| | |
|----------------|-----------------|
| Date Listed | July 15th, 2025 |
| Days on Market | 21 |
| Zoning | Zone 91 |

DATA IS DEEMED RELIABLE BUT IS NOT GUARANTEED ACCURATE BY THE REALTORS® ASSOCIATION OF EDMONTON. COPYRIGHT 2025 BY THE REALTORS® ASSOCIATION OF EDMONTON. ALL RIGHTS RESERVED.Trademarks are owned or controlled by the Canadian Real Estate Association (CREA) and identify real estate professionals who are members of CREA (REALTOR®, REALTORS®) and/or the quality of services they provide (MLS®, Multiple Listing Service®)

Listing information last updated on August 5th, 2025 at 12:32pm MDT