

# \$662,897 - 1027 14 Avenue, Edmonton

MLS® #E4447422

**\$662,897**

3 Bedroom, 3.00 Bathroom, 1,753 sqft

Single Family on 0.00 Acres

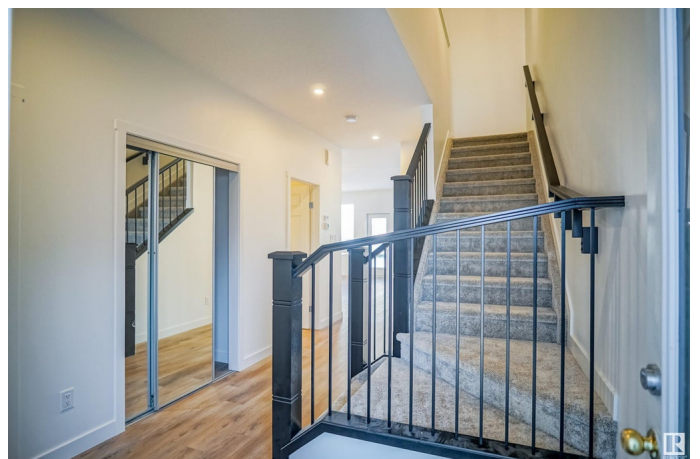
Aster, Edmonton, AB

Welcome to the "Willow" built by the award-winning builder Pacesetter homes and is located in the heart Aster and just steps to the walking trails and parks. As you enter the home you are greeted by luxury vinyl plank flooring throughout the great room, kitchen, and the breakfast nook. Your large kitchen features tile back splash, an island a flush eating bar, quartz counter tops and an undermount sink. Just off of the kitchen and tucked away by the front entry is a 3 piece bathroom and den. Upstairs is the master's retreat with a large walk in closet and a 4-piece en-suite. The second level also include 2 additional bedrooms with a conveniently placed main 4-piece bathroom and a good sized bonus room. Close to all amenities and also comes with a side separate entrance perfect for future development. \*\*\* Home is under construction and the photos used are from the same model colors may vary to be complete by March 2026 \*\*\*

Built in 2025

## Essential Information

|           |           |
|-----------|-----------|
| MLS® #    | E4447422  |
| Price     | \$662,897 |
| Bedrooms  | 3         |
| Bathrooms | 3.00      |



|                |                        |
|----------------|------------------------|
| Full Baths     | 3                      |
| Square Footage | 1,753                  |
| Acres          | 0.00                   |
| Year Built     | 2025                   |
| Type           | Single Family          |
| Sub-Type       | Detached Single Family |
| Style          | 2 Storey               |
| Status         | Active                 |

### Community Information

|             |                |
|-------------|----------------|
| Address     | 1027 14 Avenue |
| Area        | Edmonton       |
| Subdivision | Aster          |
| City        | Edmonton       |
| County      | ALBERTA        |
| Province    | AB             |
| Postal Code | T6T 2N5        |

### Amenities

|           |                        |
|-----------|------------------------|
| Amenities | See Remarks            |
| Parking   | Double Garage Attached |

### Interior

|                   |                               |
|-------------------|-------------------------------|
| Interior Features | ensuite bathroom              |
| Appliances        | Garage Control, Garage Opener |
| Heating           | Forced Air-1, Natural Gas     |
| Stories           | 2                             |
| Has Basement      | Yes                           |
| Basement          | Full, Unfinished              |

### Exterior

|                   |  |
|-------------------|--|
| Exterior          | Wood, Stone, Vinyl   |
| Exterior Features | Airport Nearby, Golf Nearby, Park/Reserve, Playground Nearby, Public Swimming Pool, Public Transportation, Schools, Shopping Nearby, See Remarks |
| Roof              | Asphalt Shingles   |
| Construction      | Wood, Stone, Vinyl   |
| Foundation        | Concrete Perimeter   |

### Additional Information

Date Listed July 11th, 2025

Days on Market 10

Zoning Zone 30

DATA IS DEEMED RELIABLE BUT IS NOT GUARANTEED ACCURATE BY THE REALTORS® ASSOCIATION OF EDMONTON. COPYRIGHT 2025 BY THE REALTORS® ASSOCIATION OF EDMONTON. ALL RIGHTS RESERVED. Trademarks are owned or controlled by the Canadian Real Estate Association (CREA) and identify real estate professionals who are members of CREA (REALTOR®, REALTORS®) and/or the quality of services they provide (MLS®, Multiple Listing Service®)

Listing information last updated on July 21st, 2025 at 5:47am MDT