

# \$619,900 - 7733 Ellesmere Lane, Sherwood Park

MLS® #E4445673

**\$619,900**

4 Bedroom, 3.50 Bathroom, 1,622 sqft

Single Family on 0.00 Acres

Emerald Hills, Sherwood Park, AB

Beautiful 2-storey in desirable Emerald Hills with a FULLY FINISHED BASEMENT! The main floor offers a bright, open layout perfect for entertaining. The kitchen features ample cabinet/counter space, raised eating bar & UPGRADED APPLIANCES. Upgraded vinyl FLOORING on the main floor and in all the washrooms. Dining area overlooks the PROFESSIONALLY LANDSCAPED YARD through patio doors. Renovated MAIN-FLOOR LAUNDRY & 2pc bath complete the main. Upstairs, the MASSIVE primary suite boasts a huge walk-in closet & full ensuite. Two more bedrooms with BUILT-IN CLOSET ORGANIZERS & a 4pc bath finish the level. The basement is PROFESSIONALLY DEVELOPED with a 4th bedroom, full bath with TILED SHOWER & large rec room. Fresh interior paint & OVERSIZED GARAGE for added convenience. Stay cool with A/C! Backyard is an OASISâ€”huge deck with privacy wall/pergola, HOT TUB, & custom shed. This home has it ALL!

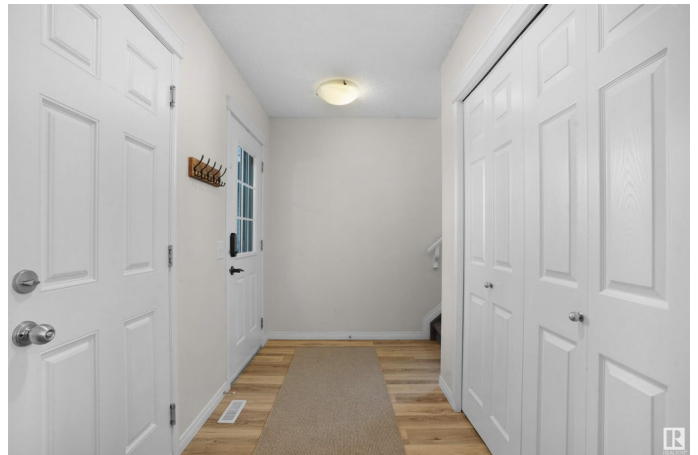
Built in 2013

## Essential Information

MLS® # E4445673

Price \$619,900

Bedrooms 4



|                |                        |
|----------------|------------------------|
| Bathrooms      | 3.50                   |
| Full Baths     | 3                      |
| Half Baths     | 1                      |
| Square Footage | 1,622                  |
| Acres          | 0.00                   |
| Year Built     | 2013                   |
| Type           | Single Family          |
| Sub-Type       | Detached Single Family |
| Style          | 2 Storey               |
| Status         | Active                 |

### Community Information

|             |                     |
|-------------|---------------------|
| Address     | 7733 Ellesmere Lane |
| Area        | Sherwood Park       |
| Subdivision | Emerald Hills       |
| City        | Sherwood Park       |
| County      | ALBERTA             |
| Province    | AB                  |
| Postal Code | T8H 0P7             |

### Amenities

|                |   |
|----------------|---|
| Amenities      | Air Conditioner, Closet Organizers, Deck, Gazebo, Hot Tub, Parking-Extra, See Remarks |
| Parking Spaces | 4   |
| Parking        | Double Garage Attached  |

### Interior

|                   |   |
|-------------------|---|
| Interior Features | ensuite bathroom  |
| Appliances        | Dishwasher-Built-In, Dryer, Microwave Hood Fan, Refrigerator, Storage Shed, Stove-Electric, Washer, Window Coverings, Hot Tub |
| Heating           | Forced Air-1, Natural Gas   |
| Fireplace         | Yes   |
| Fireplaces        | Glass Door, Heatilator/Fan, Mantel  |
| Stories           | 2   |
| Has Basement      | Yes   |
| Basement          | Full, Finished  |

### Exterior

|          |                    |
|----------|--------------------|
| Exterior | Wood, Stone, Vinyl |
|----------|--------------------|

|                   |  |
|-------------------|--|
| Exterior Features | Fenced, Flat Site, Schools, Shopping Nearby, See Remarks |
| Roof              | Asphalt Shingles   |
| Construction      | Wood, Stone, Vinyl                                       |
| Foundation        | Concrete Perimeter                                       |

**Additional Information**

|                |                |
|----------------|----------------|
| Date Listed    | July 3rd, 2025 |
| Days on Market | 26             |
| Zoning         | Zone 25        |

DATA IS DEEMED RELIABLE BUT IS NOT GUARANTEED ACCURATE BY THE REALTORS® ASSOCIATION OF EDMONTON. COPYRIGHT 2025 BY THE REALTORS® ASSOCIATION OF EDMONTON. ALL RIGHTS RESERVED.Trademarks are owned or controlled by the Canadian Real Estate Association (CREA) and identify real estate professionals who are members of CREA (REALTOR®, REALTORS®) and/or the quality of services they provide (MLS®, Multiple Listing Service®)

Listing information last updated on July 29th, 2025 at 12:02am MDT