

\$425,000 - 2912 10360 102 Street, Edmonton

MLS® #E4425887

\$425,000

1 Bedroom, 1.00 Bathroom, 655 sqft

Condo / Townhouse on 0.00 Acres

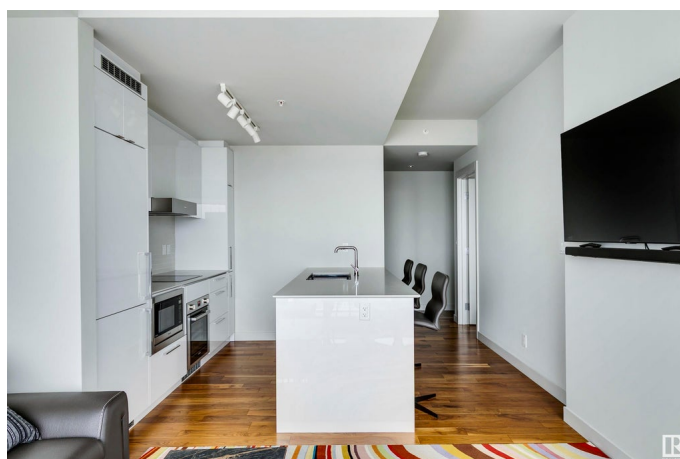
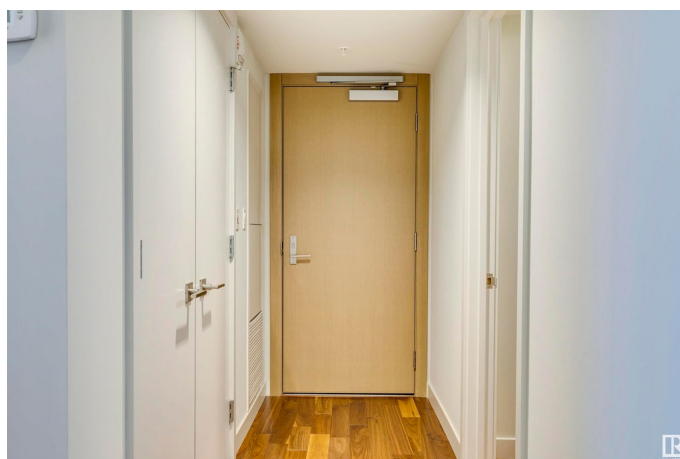
Downtown (Edmonton), Edmonton, AB

This turnkey property isn't just about space, it's about lifestyle! Experience the perfect fusion of style, comfort, and convenience in this stunning 1-bedroom plus den, 1-bath suite with breathtaking views and a titled parking spot. Perched above the JW Marriott, The Legends Private Residences offer world-class amenities, including a pool, hot tub, steam room, conference room, fitness centre, billiards lounge, rooftop patio with BBQ area, pet walk, and 24/7 concierge service. Monthly fees cover heat, water, and access to all these exceptional features. With direct access to Rogers Place, the LRT, top-tier restaurants, and shopping via the Pedway System, every convenience is at your doorstep. The Legends redefine elegance, offering an elevated lifestyle with personalized service, ensuring luxury and comfort in the heart of the Ice District.

Built in 2017

Essential Information

MLS® #	E4425887
Price	\$425,000
Bedrooms	1
Bathrooms	1.00
Full Baths	1
Square Footage	655



Acres	0.00
Year Built	2017
Type	Condo / Townhouse
Sub-Type	Apartment High Rise
Style	Single Level Apartment
Status	Active

Community Information

Address	2912 10360 102 Street
Area	Edmonton
Subdivision	Downtown (Edmonton)
City	Edmonton
County	ALBERTA
Province	AB
Postal Code	T5J 0K6

Amenities

Amenities	Air Conditioner, Closet Organizers, Exercise Room, Hot Tub, Parking-Visitor, Party Room, Patio, Pool-Indoor, Sauna; Swirlpool; Steam, Secured Parking, Security Personnel, Social Rooms, See Remarks
Parking Spaces	1
Parking	Heated, Parkade
Has Pool	Yes

Interior

Appliances	Dishwasher-Built-In, Furniture Included, Garage Control, Hood Fan, Oven-Built-In, Oven-Microwave, Refrigerator, Stacked Washer/Dryer, Stove-Countertop Electric, See Remarks
Heating	Fan Coil, Natural Gas
# of Stories	54
Stories	1
Has Basement	Yes
Basement	None, No Basement

Exterior

Exterior	Concrete, Metal
Exterior Features	Public Transportation, Schools, Shopping Nearby, View City, See Remarks
Roof	EPDM Membrane

Construction	Concrete, Metal
Foundation	Concrete Perimeter

Additional Information

Date Listed	March 15th, 2025
Days on Market	153
Zoning	Zone 12
Condo Fee	\$860

DATA IS DEEMED RELIABLE BUT IS NOT GUARANTEED ACCURATE BY THE REALTORS® ASSOCIATION OF EDMONTON. COPYRIGHT 2025 BY THE REALTORS® ASSOCIATION OF EDMONTON. ALL RIGHTS RESERVED.Trademarks are owned or controlled by the Canadian Real Estate Association (CREA) and identify real estate professionals who are members of CREA (REALTOR®, REALTORS®) and/or the quality of services they provide (MLS®, Multiple Listing Service®)

Listing information last updated on August 15th, 2025 at 2:47am MDT